



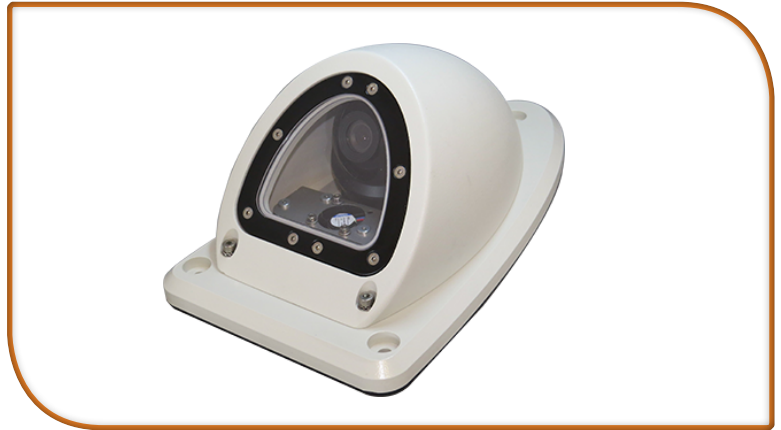
Product Datasheet

Part Code: 10-230-000-02

Rail DOO CCTV System

Key Features

- True Day/Night Colour DSP Camera
- Wide Dynamic Range for extreme headlight suppression
- Ceiling and wall mounted flexibility
- IP66 Rated - ideal for external or damp/air conditioned environments
- 3D Gimbal delivers maximum flexibility lens rotation and placement
- Toughened scratch resistance window glass
- Ultra-High Resolution - 600TVL
- Die-cast aluminium housing for lightness and strength
- 12VDC low power consumption



Specifications

Camera	Current:	0.080 mA
	Voltage:	12 VDC
	Power:	0.96 W
Heater with fan	Power:	7.2 W
	Voltage:	24 VDC
	Total current:	0.30 A
	Fuse:	1.10 A
Housing:	Airflow:	3.25 m3/h
	Material:	SLS PA2200 White
	Surface treatment:	Wet paint NCS S 1502-Y
Window:	Material:	Polycarbonate (PC)
	Surface treatment:	None
Mounting plate	Material:	Aluminium AW5083
	Surface treatment:	Wet paint NCS S 1502-Y
Mounting flange camera	Material:	Aluminium AW50ST
	Surface treatment:	Powder coat RAL 9005